

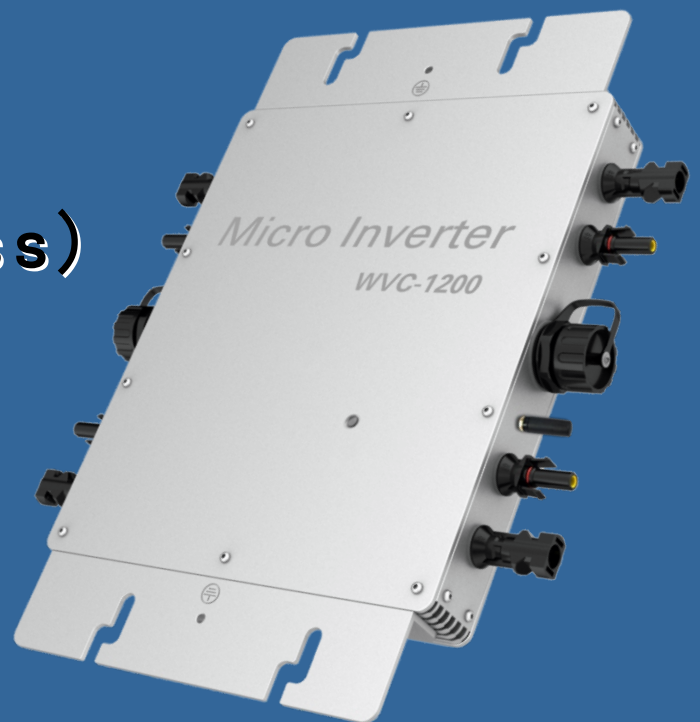
..... Green Energy **Expert** .....

..... Smart Inverter .....

**Smart Inverter**

**WVC-1200 (Wireless)**

**Descripton**



Ver:2018-13

# ATO-WVC-1200 (433MHz Wireless) Micro Inverter



**ATO-WVC-1200 (Wireless)** Using IP65 waterproof streamline design, Can effectively prevent rainwater on the surface erosion, Built-in high-performance Maximum Power Point Tracking ( MPPT ) Function , Better able to track changes in the solar luminosity and control different output power, Effectively capture and collect sunlight. AC electric power transmission using the reverse transmission technology, Is one of our patented technology, The inverter output power can provide load priority use, Extra electricity to the grid, Efficient use of the inverter to the power emitted, Electricity transmission rate of up to 99%.

Communication using two modes, Between the inverter and Collector Using power line carrier communication signals, Collector with a PC or other devices to communicate Using RS232 serial port/ WIFI wireless communication. Intelligent monitoring systems, The inverter can collect real-time data, Inverter can be controlled startup / shutdown / power regulation.

---

## Features :

- High performance maximum power point tracking (MPPT)
- Reverse power transmission
- Intelligent monitoring management
- Input /output is fully isolated to protect the electrical safety
- Multiple parallel stacking
- Digital control system
- Simplify maintenance (user serviceable)
- Operation and maintenance costs low
- Flexible installation
- Use the wireless 433MHz communication mode

## Micro Inverter

### ATO-WVC-1200 (Wireless)

#### ATO-WVC-1200 (Wireless)

Parameters	
Maximum input power	1200Watt
Recommended using solar panels	Power4×300W,open circuit voltage 36-50VOC
Solar panel open circuit voltage range	36-50VOC
Peak power tracking voltage	22-50V
Min / Max start voltage	22-50V
Maximum DC short current	80A
Maximum Input Current	54.4A
Automatic shift AC voltage and output	Automatic shift local grid voltage

Output Data	@120VAC	@230VAC
Peak power output	1200Watt	1200Watt
Rated output power	1150Watt	1150Watt
Rated output current	9.58A	5A
Rated voltage range	80-160VAC	180-260VAC
Rated frequency range	47-52.5Hz/57-62.5Hz	47-52.5Hz/57-62.5Hz
Power factor	>99%	>99%
Maximum units per branch circuit	3PCS Single-phase	5PCS Single-phase

Output Efficiency	@120VAC	@230VAC
Static MPPT efficiency	99.5%	99.5%
Maximum output efficiency	91.2%	92.5%
Night time power consumption	<1W	<1W
THD	<5%	<5%

#### Exterior

Operating temperature range	-40 to +60
Dimensions (WxHxD)	370mm×300mm×41.6mm
N.W.	2.83kg
Waterproof level	IP65
Cooling	Self-cooling
Communication Mode	Wireless 433MHz
Power transmission mode	Reverse transfer, load priority
Monitoring System	Lifetime free
Electromagnetic compatibility	EN50081.part1 EN50082.part1
Grid disturbance	EN61000-3-2 Safety EN62109
Grid detection	DIN VDE 1026 UL1741
Certificate	CEC,CE National patent technology

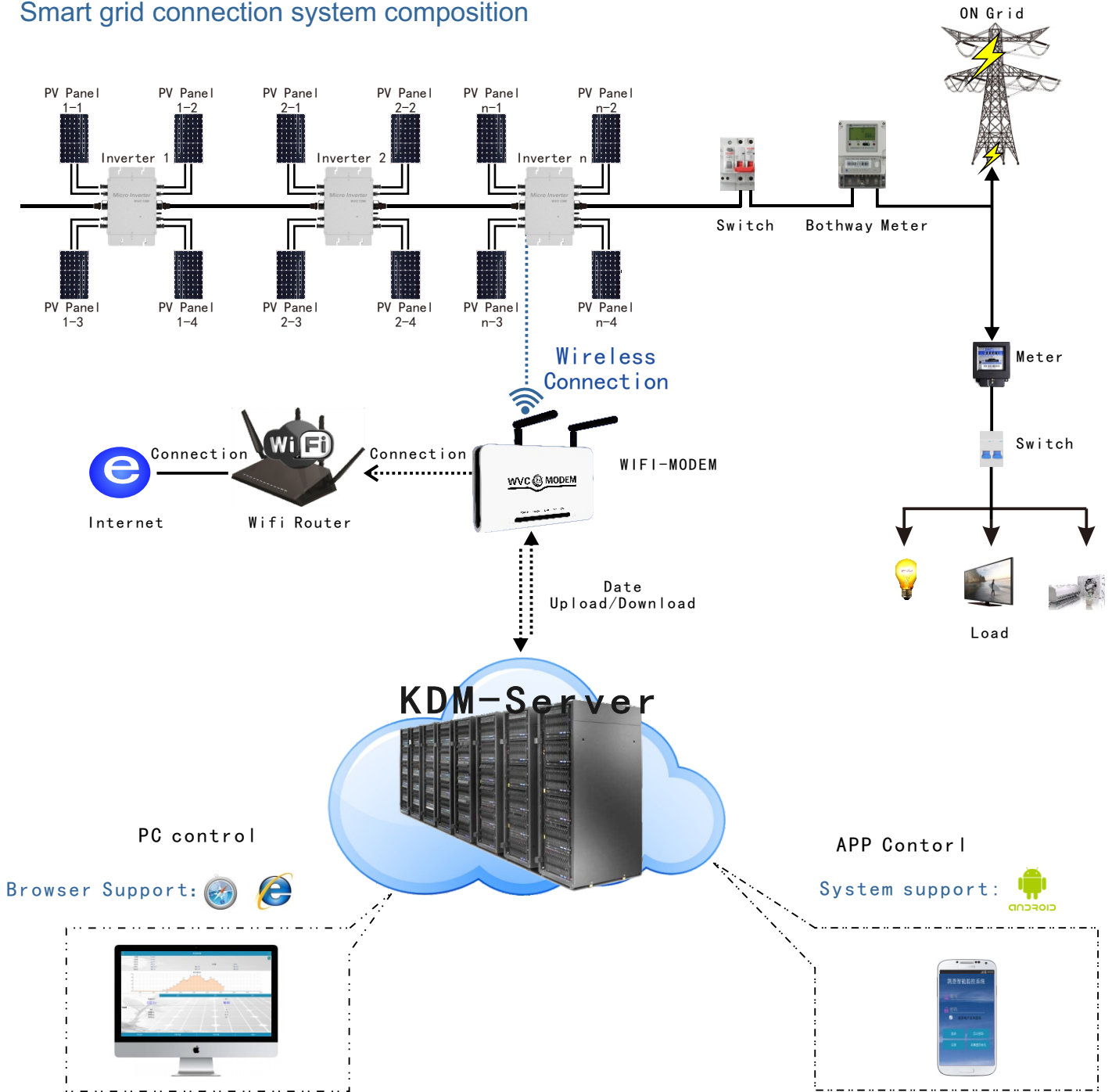
#### Package weight

Sepcification	Single(packing)	Whole(2PCS)
G.W.	4.03Kg	9.00Kg
Dimensions	430×375×115mm	430×400×270mm

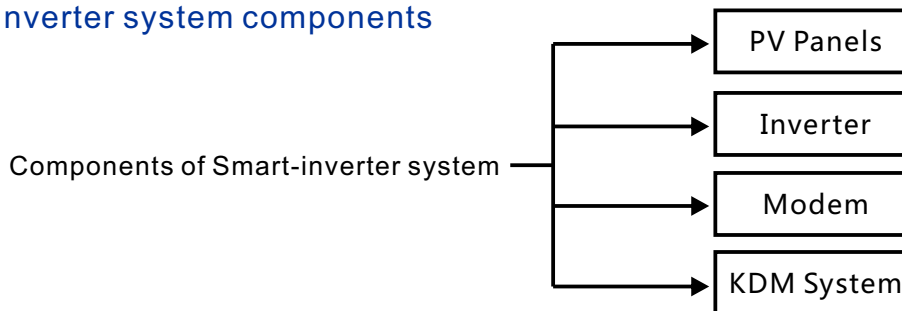
\* Attn:each MODEM can control 46 PCS micro inverters on the condition of non-intelligent electric box

**Micro Inverter**  
**ATO-WVC-1200 (Wireless)**

Smart grid connection system composition



Smart-grid inverter system components

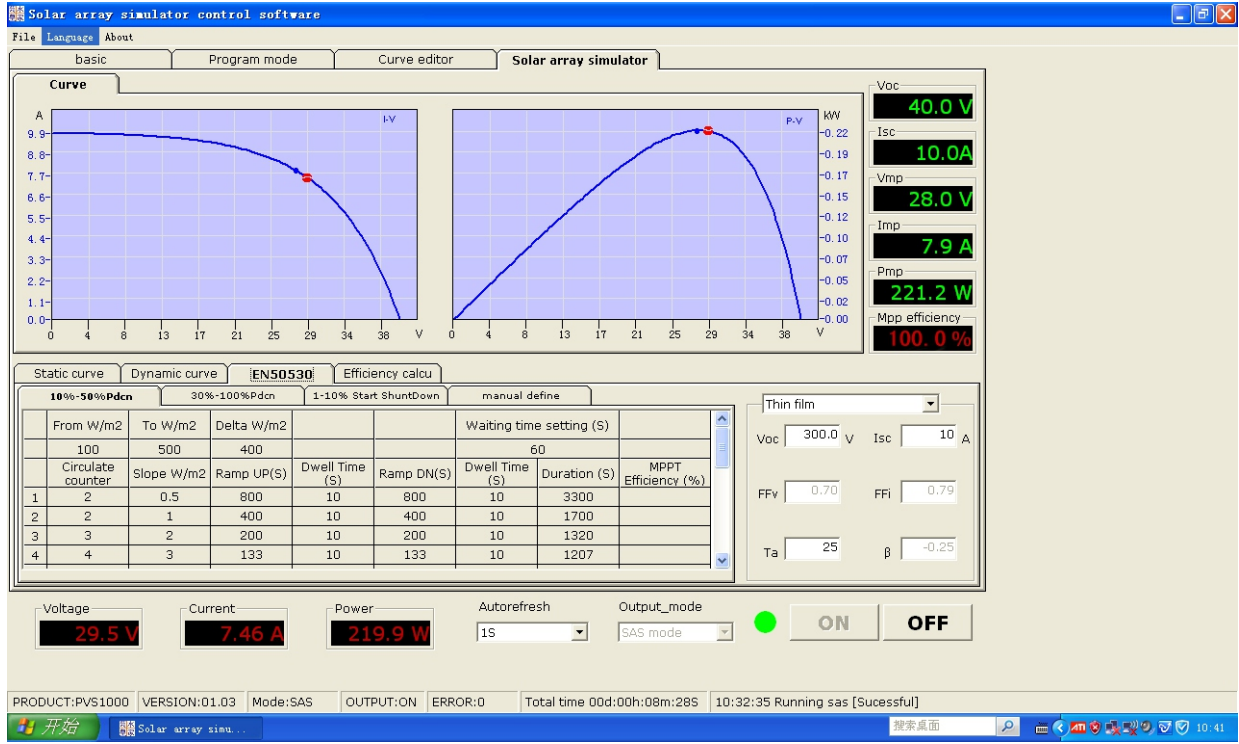


## Micro Inverter

### ATO-WVC-1200 (Wireless)

#### High performance maximum power point tracking (MPPT)

Powerful MPPT algorithm , Optimize the power from the solar panels to collect , Accurately capture and lock the maximum output power point , A substantial increase in output power greater than 25% or more.



#### MPPT

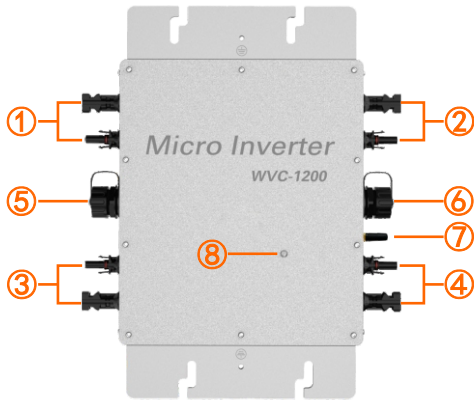
#### Power Output: ( Reverse power transmission )

Reverse efficient power transmission technology , Patented technology , The inverter power transmission in the reverse direction , Automatic detection circuit load and using priority , Additional power transmitted to the grid , Power transmission rate up to 99.9%.Higher output efficiency in photovoltaic application system manipulation.

## Micro Inverter

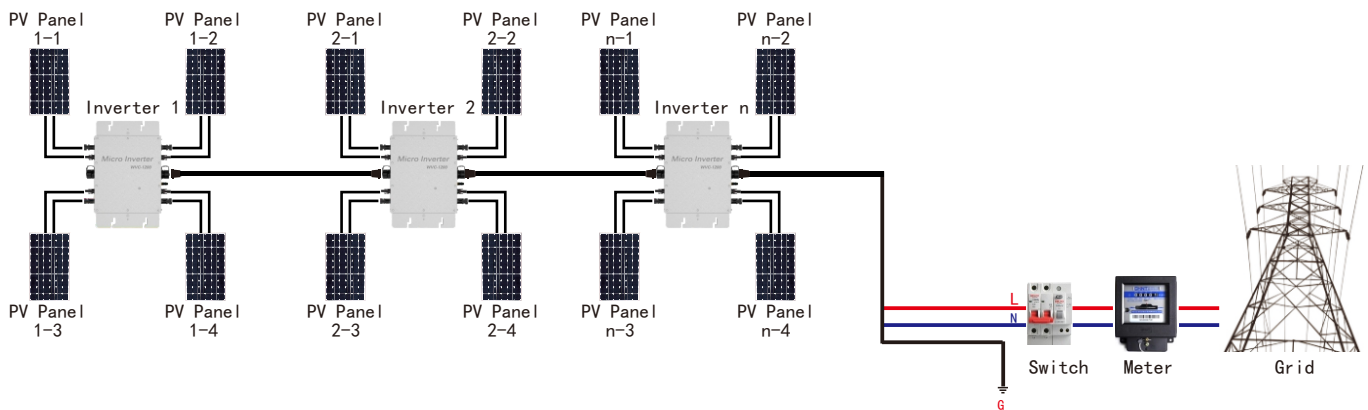
### ATO-WVC-1200 (Wireless)

**ATO-WVC-1200 (Wireless)** Using IP65 waterproof streamline design, Can effectively prevent rainwater on the surface erosion, Built-in high-performance Maximum Power Point Tracking (MPPT) Function, Better able to track changes in the solar luminosity and control different output power, Effectively capture and collect sunlight. AC electric power transmission using the reverse transmission technology, Is one of our patented technology, The inverter output power can provide load priority use, Extra electricity to the grid, Efficient use of the inverter to the power emitted, Electricity transmission rate of up to 99%.

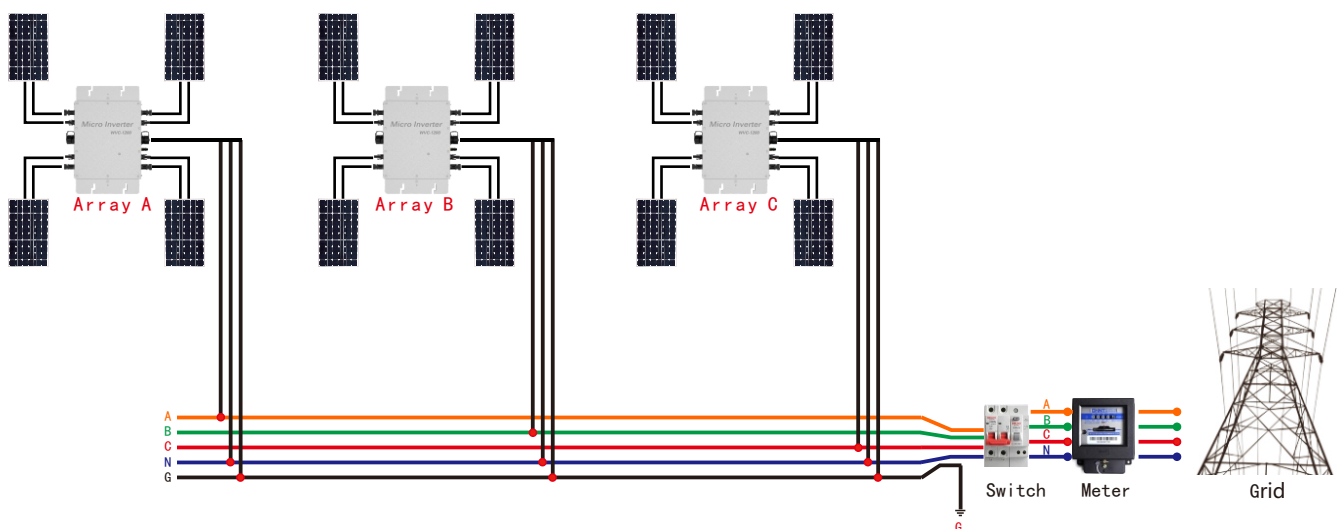


- ① PV Panel input 1
- ② PV Panel input 2
- ③ PV Panel input 3
- ④ PV Panel input 4
- ⑤ AC Input - Connect to the Previous
- ⑥ AC Input - Connect to the Next
- ⑦ 433MHz Antenna
- ⑧ LED Display

## Single-phase electrical schematics



## Three-phase electrical schematics



**Micro Inverter**

**ATO-WVC-1200 (Wireless)**

**Installation and connection**

ATO-WVC-1200 Series Solar Inverter very easy to install, No need for project professionals can also install. Whether installation or maintenance are very simple, No maintenance.

