

Smart Inverter WVC-600 (Wireless) Description



ATO-WVC-600 (433MHz Wireless) Micro Inverter



ATO-WVC-600 (Wireless) Using IP65 waterproof streamline design, Can effectively prevent rainwater on the surface erosion, Built-in high-performance Maximum Power Point Tracking (MPPT) Function , Better able to track changes in the solar luminosity and control different output power, Effectively capture and collect sunlight. AC electric power transmission using the reverse transmission technology, Is one of our patented technology, The inverter output power can provide load priority use, Extra electricity to the grid, Efficient use of the inverter to the power emitted, Electricity transmission rate of up to 99%.

Communication using two modes, Between the inverter and Collector Using power line carrier communication signals, Collector with a PC or other devices to communicate Using RS232 serial port/ WIFI wireless communication. Intelligent monitoring systems, The inverter can collect real-time data, Inverter can be controlled startup / shutdown / power regulation.

Features :

- High performance maximum power point tracking (MPPT)
- Reverse power transmission
- Intelligent monitoring management
- Input /output is fully isolated to protect the electrical safety
- Multiple parallel stacking
- Digital control system
- Simplify maintenance (user serviceable)
- Operation and maintenance costs low
- Flexible installation
- Use the wireless 433MHz communication mode

Micro Inverter

ATO-WVC-600 (Wireless)

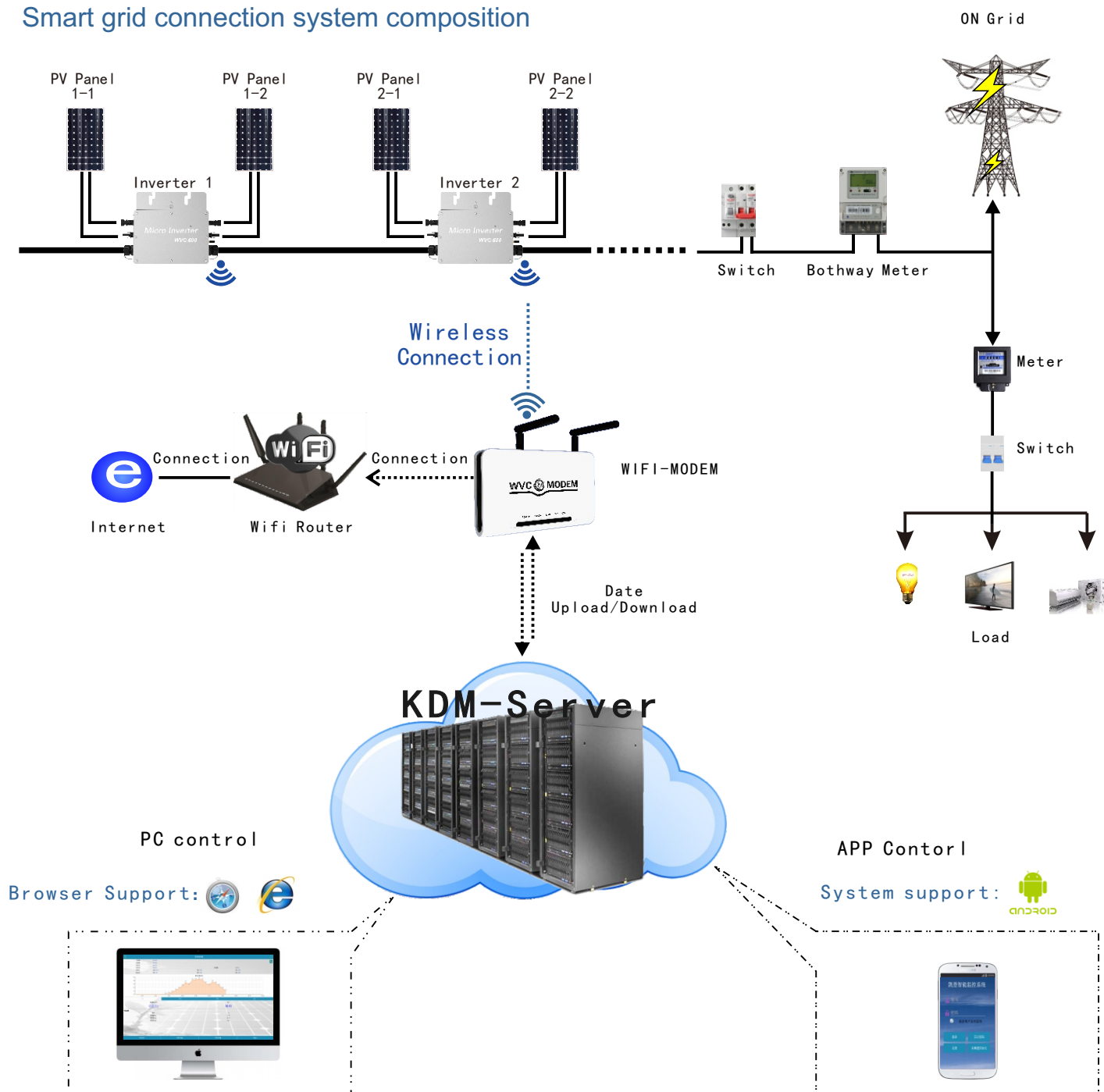
ATO-WVC-600 (Wireless)

Parameters		
Maximum input power	600Watt	
Recommended using solar panels	Power2×300W,open circuit voltage 36-50VOC	
Solar panel open circuit voltage range	36-50VOC	
Peak power tracking voltage	22-50V	
Min / Max start voltage	22-50V	
Maximum DC short current	35A	
Maximum Input Current	24A	
Automatic shift AC voltage and output	Automatic shift local grid voltage	
Output Data	@120VAC	@230VAC
Peak power output	630Watt	630Watt
Rated output power	600Watt	600Watt
Rated output current	5A	2.6A
Rated voltage range	80-160VAC	180-260VAC
Rated frequency range	48-51Hz/58-61Hz	48-51Hz/58-61Hz
Power factor	>99%	>99%
Maximum units per branch circuit	5PCS Single-phase	10PCS Single-phase
Output Efficiency	@120VAC	@230VAC
Static MPPT efficiency	99.5%	99.5%
Maximum output efficiency	95%	95%
Night time power consumption	<1W	<1W
THD	<5%	<5%
Exterior		
Operating temperature range	-40 to +60	
Dimensions (WxHxD)	283mm×200mm×41.6mm	
N.W.	1.63kg	
Waterproof level	IP65	
Cooling	Self-cooling	
Communication Mode	Wireless 433MHz	
Power transmission mode	Reverse transfer, load priority	
Monitoring System	Lifetime free	
Electromagnetic compatibility	EN50081.part1 EN50082.part1	
Grid disturbance	EN61000-3-2 Safety EN62109	
Grid detection	DIN VDE 1026 UL1741	
Certificate	CEC,CE National patent technology	
Package weight		
Sepcification	Single(packing)	Whole(5PCS)
G.W.	2.55Kg	14.10Kg
Dimensions	342×240×100mm	440×380×260mm

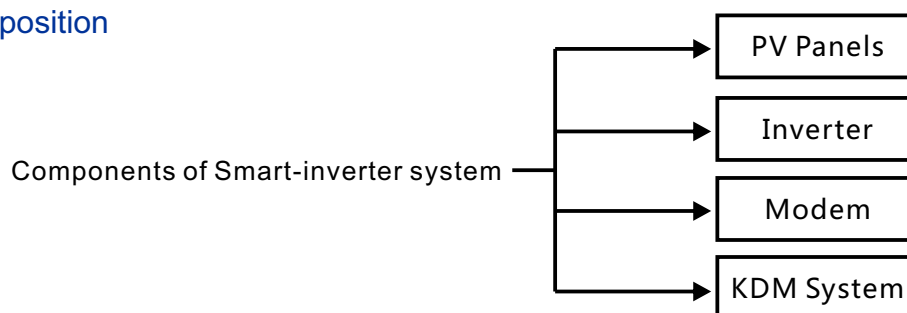
* Attn:each MODEM can control 46 PCS micro inverters on the condition of non-intelligent electric box

Micro Inverter ATO-WVC-600 (Wireless)

Smart grid connection system composition

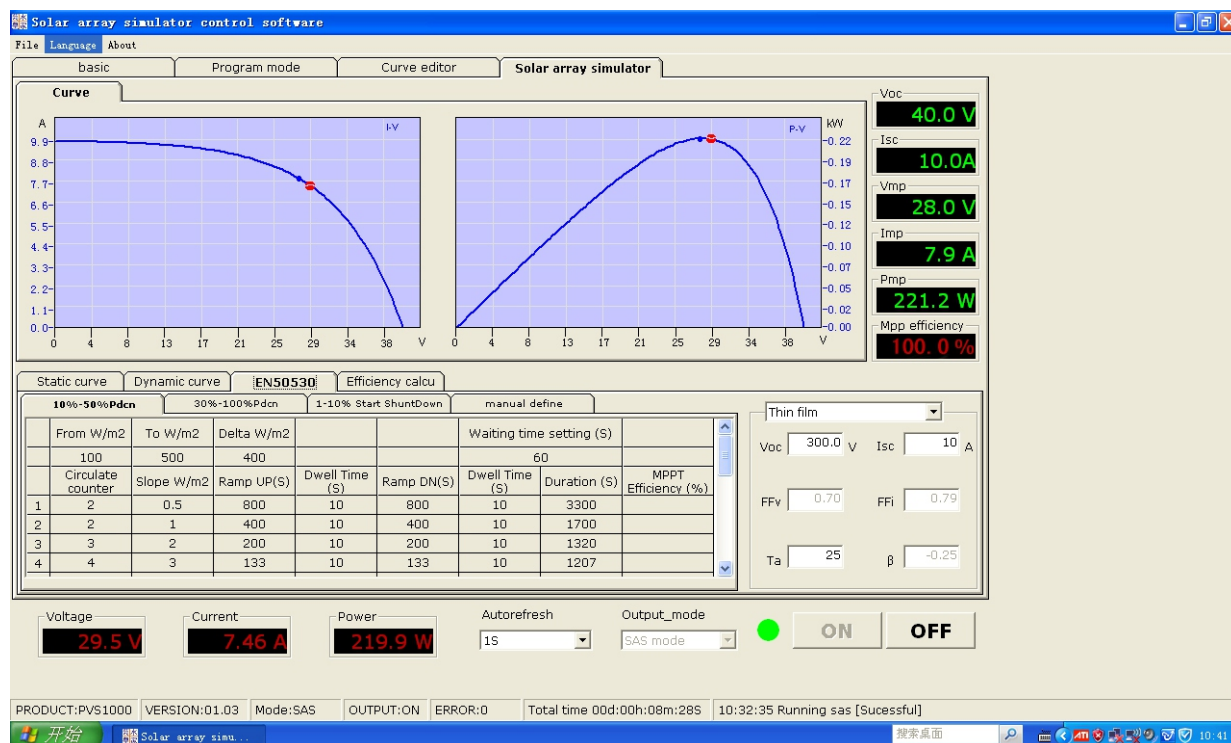


System composition



High performance maximum power point tracking (MPPT)

Powerful MPPT algorithm , Optimize the power from the solar panels to collect , Accurately capture and lock the maximum output power point , A substantial increase in output power greater than 25% or more.



MPPT

Power Output: (Reverse power transmission)

Reverse efficient power transmission technology , Patented technology , The inverter power transmission in the reverse direction , Automatic detection circuit load and using priority , Additional power transmitted to the grid , Power transmission rate up to 99.9%.Higher output efficiency in photovoltaic application system manipulation.

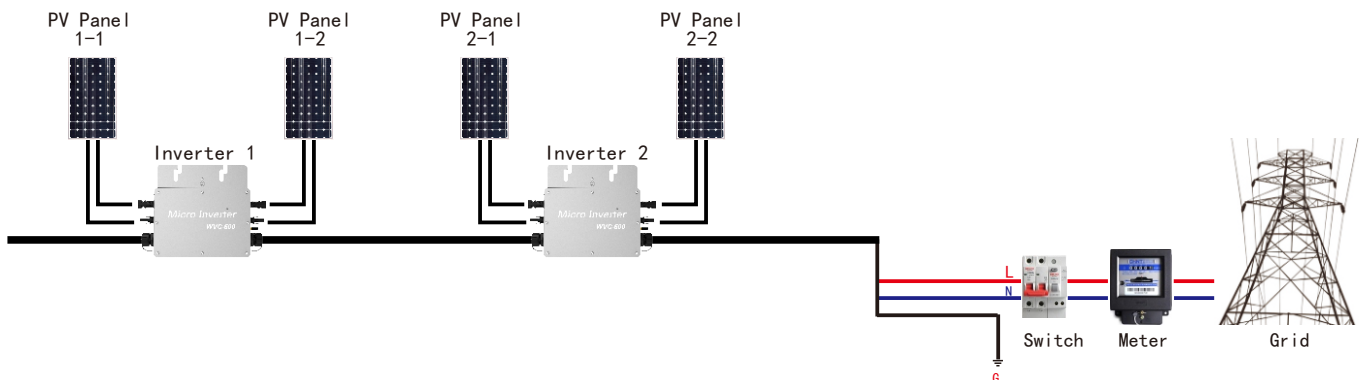
Micro Inverter

ATO-WVC-600 (Wireless)

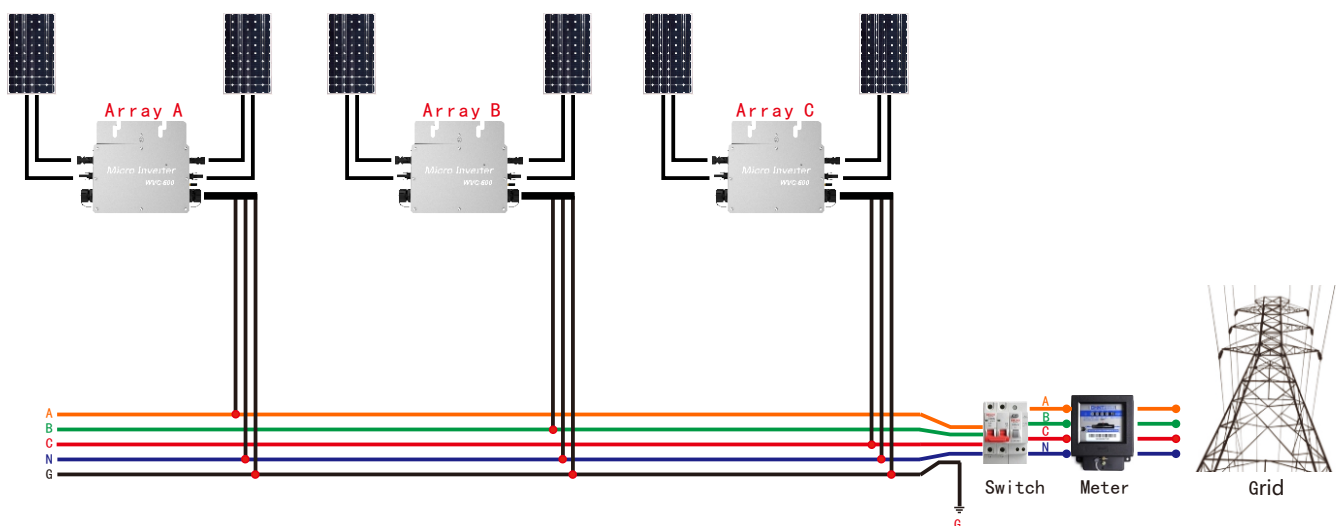
ATO-WVC-600 (Wireless) Using IP65 waterproof streamline design, Can effectively prevent rainwater on the surface erosion, Built-in high-performance Maximum Power Point Tracking (MPPT) Function , Better able to track changes in the solar luminosity and control different output power, Effectively capture and collect sunlight. AC electric power transmission using the reverse transmission technology, Is one of our patented technology, The inverter output power can provide load priority use, Extra electricity to the grid, Efficient use of the inverter to the power emitted, Electricity transmission rate of up to 99%.



Single-phase electrical schematics



Three-phase electrical schematics



Micro Inverter

ATO-WVC-600 (Wireless)

Installation and connection

ATO-WVC-295 Series Solar Inverter very easy to install, No need for project professionals can also install. Whether installation or maintenance are very simple, No maintenance.

