

Wi-Fi Plug Pro

Quick Installation Guideline

Wi-Fi Plug Pro-13



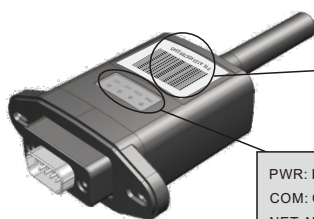
iOS



Android

1. Installation

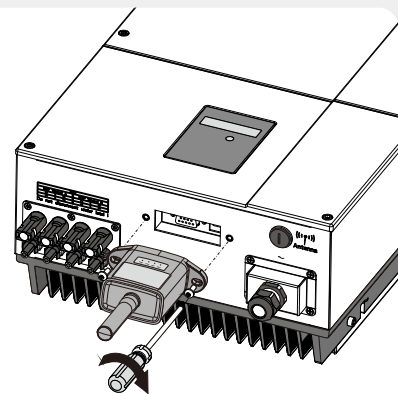
- Align the serial port of the Wi-Fi Plug Pro with the inverter and plug it in tightly.
- Fasten the Wi-Fi Plug Pro to the inverter with the screw.
- Confirm the status of the LED indicator (After step2.3, when 4 LED indicators keep on, showing the normal working status).



Datalogger PN



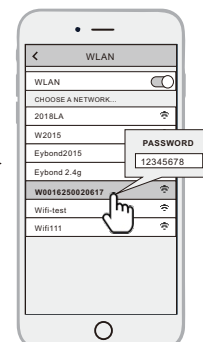
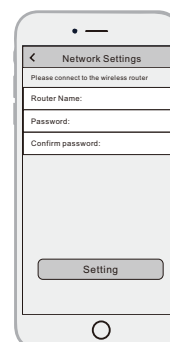
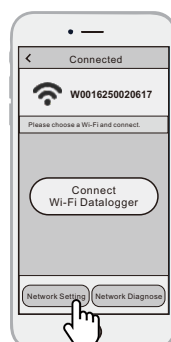
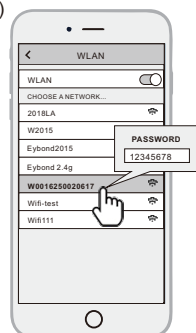
PWR: Power Status LED indicator
COM: Communication Status LED indicator
NET: Network Status LED indicator
SRV: Server Status LED indicator



2. Wireless Router Connection

2.1 Download APP and Wi-Fi connection

- Scan the QR Code from the cover of this guideline and download the APP.
- Select the same number of Wi-Fi Plug Pro PN to connect on your phone WLAN.
(Initial Password:12345678)



2.2 Wi-Fi Config

- Open the APP, Tap the **Wi-Fi Config** button to enter this page.
- Then tap the **Network Setting** button.

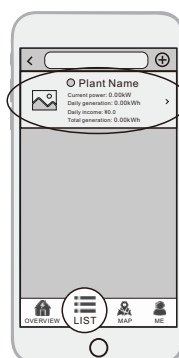
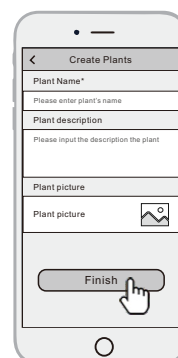
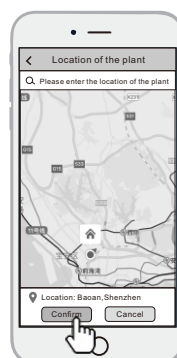
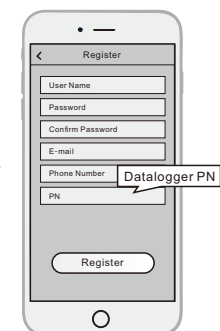
2.3 Network Setting

- According to the prompts, type in the information to finish the network setting.
- After the Wi-Fi Plug Pro is restarted, reconnect the Wi-Fi which connected by step 2.1.

3. Create Account And Plant

3.1 Create Account

- Open the APP, tap the **Register** button.
- According to the prompt information, complete creating an account.



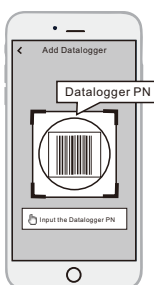
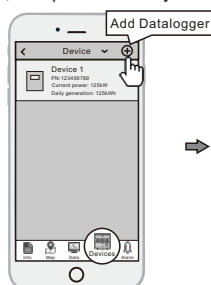
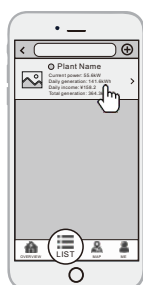
3.2 Create Plant

- Login the account and click the **list** button on the bottom of the home page.
- Tap the "+" button on the top-right corner of the list page.
- According to the prompts, type in the information to finish creating plant.

3.3 Add Multiple Dataloggers

Note: One account can create multiple plants and one plant can add multiple dataloggers. If you only have one datalogger, you can ignore this step.

- Tap the new plant you just created, and enter its home page.
- Click the **Device** button on the bottom of the home page.
- Tap the "+" button at the top-right corner to add the datalogger.
- Scan the datalogger PN on the Wi-Fi Plug Pro, or input it manually.



Note: Besides the SmartClient APP, you also can remote monitoring your plants by using WeChat mini program.



Scan the Wechat QR code to use the mini program.